

A Home for Oxford Tennis

OULTC Clubhouse & Grass Courts Redevelopment

An Exciting Time for OULTC

Founded in 1879, OULTC is a prestigious and thriving club, which has been consistently growing year on year. As it stands today the club has over 400 members (with more expected to sign up), making it the largest sports club in the University. This is a significant achievement which we are keen to build upon. Over 20 training sessions take place every week for our various teams. 10 Varsity Tennis Matches (5 men's, 5 ladies') are now played. We are proud of the diversity of our tennis community, in particular the ever-growing number of social members. Tennis is more than a hobby, more than a sport: it is a lifelong quest for self-improvement and an activity for collective enjoyment. The physical, mental, and social benefits of tennis have become an important part of the 'Oxford experience' for so many, in keeping with the University's stated desire to encourage student well-being via their **Active at Oxford** campaign.

One of the virtues of Oxford is the balance between modernisation and championing our history. Some things don't change... we still have a burning desire to shoe the tabs in everything we do. However, some things must change if we are to continue developing. It is only fitting that the club's facilities follow the pattern of development of the club described above. To accommodate the vast range of OULTC members, and thanks to one especially generous donation, we have been gradually improving our facilities at Iffley Road, in partnership with OU Sport:

- **New Pro Clay courts:** opened in early 2019, these superb courts have already transformed the playing experience at the club; these are the same calibre of courts as those at the National Tennis Centre. We welcome you to come and try these out some time!
- **New court fencing:** around both the new clay courts and existing grass courts new fences have been put up, which give the overall site a more professional appearance and allow for windbreakers to improve playing conditions
- **New boundary fencing:** the old wooden fence line along Iffley Road has been replaced by elegant cast-iron railings which allow passers-by to see into the site and thus have a dual purpose of serving to promote tennis and allow for greater security
- **Revitalised grass courts:** I am sure many of you are familiar with our Iffley road grass courts and will be very pleased to know that there is fresh impetus to make the most of the grass courts with the support of the OU Sport grounds maintenance team so that Iffley Road can host more summer season matches.



The Clubhouse

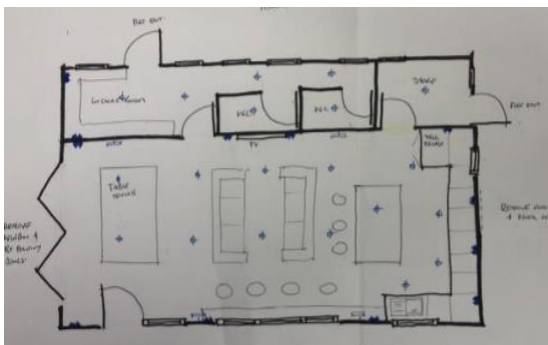
OxFORD
ASSET MANAGEMENT

With this continuous improvement underway, we are now seeking to redevelop the rather modest clubhouse, which has stood since the mid-1980s (can you believe it!!). The clubhouse is one of the most important parts of any tennis club. It is part of the image many are left with when they leave a tennis club, and really is the club's 'home'. While structurally sound, the interior of the current clubhouse is out of date, lacks proper heating and does not offer a welcoming environment for hosting the club's members and visitors. This redevelopment will give OULTC the home it deserves and celebrate our heritage in a warm, relaxed manner.

Before...



Floor plan...



Our new and improved clubhouse...



Project scope

This project will allow us to utilise significantly more of the current footprint that the building provides and to make it a more modern, hospitable space for club members and visitors to socialise before and after matches/training sessions. A summary of the key changes is as follows:

- Redevelop the heating system of the clubhouse, including double glazing all windows and adding more insulation to the loft area
- Add bi-fold doors opening onto a new outdoor decking area
- Create a new side entrance to the clubhouse to maintain tidiness
- Replace the existing unused changing rooms, showers and toilets with redesigned unisex changing cubicle and brand- new toilets
- Install a new kitchen and table for dining and club meetings
- Create a lounge area, including Wi-Fi and TV/presentation screen
- Allow for additional hosting space for larger events, doubling as a games area with foldable table tennis table.

Project benefits

The developments described above will give OULTC the home it deserves, befitting of the world's best academic institution. We will have:

- A warm, functional, up-to-date clubhouse for both members and visitors to use
- A welcoming environment for hosting matches against fellow universities, clubs and counties
- Separate kitchen/dining and lounge areas to prepare catering and look after guests
- Folding doors to open onto decking area outside to host BBQs in the summer
- A games area for members/visitors to use when not on court
- A 'wall of fame' montage of photos celebrating OULTC's rich history through to the present day
- A private space for teams to plan, review performance and socialise

Project timing, cost and funding sources

Due to the Covid-19 pandemic, we have had to put our plans on hold, and our schedule for the project is subject to change depending on how the situation develops. Nevertheless, we are focused on completing the project in time for Trinity Term 2023, at which point in the year the Iffley Road courts are most used and when we host Cambridge for 8 separate Varsity Matches.

The estimated total project cost, comprising both clubhouse development and grass court revitalisation, is £125,000. This includes all surveys, design, labour, fixtures and fittings, project management costs and non-reclaimable VAT. We are pleased to report that half of the funding has already been pledged, and we are now seeking support from alumni and friends in order to protect OULTC's (modest) reserves.



How can you help?

With half of the funds already committed, we will be extremely grateful to anyone who feels they can support the club in this exciting endeavour. Suggested donations are £100, £250, £500 and £1,000 with any other contribution being most welcome.

Donations should be made via the University Development Office which can attract a further 25% Gift Aid, increasing the value to the club.

Please visit www.development.ox.ac.uk/sport/clubs/lawn-tennis to make your contribution directly online. If you would prefer to receive a printed donation form in the post, would like to discuss the project in further detail and/or are considering a more substantial donation, please get in touch with Pauline Pinto, OU Sport Development Officer, who manages all giving to OU Sport in the Development Office:

pauline.pinto@devoff.ox.ac.uk or +44 (0)7721 233492.

All donors, and indeed all alumni and supporters of OULTC, are always welcome to come and visit us at Iffley Road, albeit this may not be possible during these current times due to Covid-19 restrictions. Please get in touch via our website and oultc.org, opt in to receive news from time to time and follow us on social media. We'd love to keep in touch with you and show you the new home for Oxford Tennis!



Hayyu Imanda, Alumni Officer, OULTC



Jeff Hunter, Chairman, OULTC

